

Inspirational Leadership: Tactics to Inspire



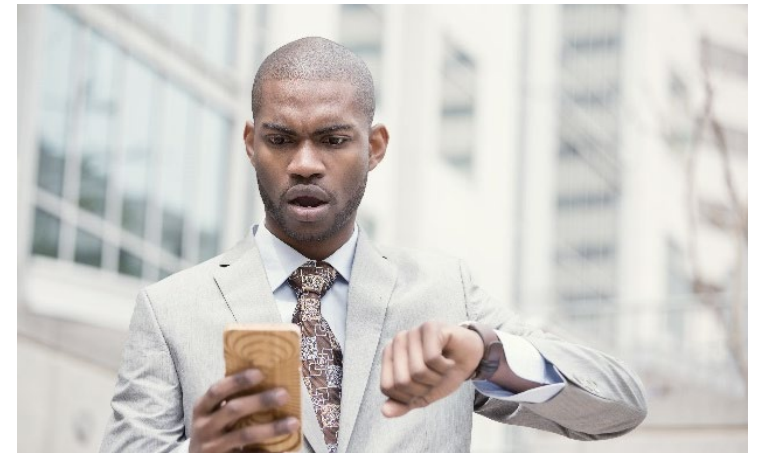
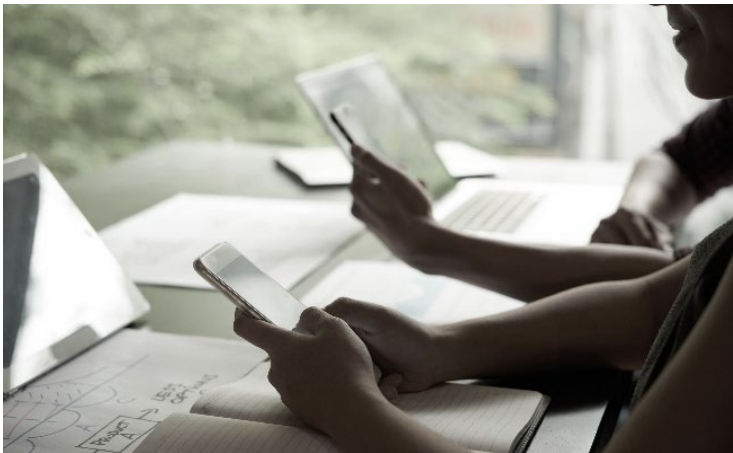
What gets in the way of following through on our **Inspirational Leadership** plans?



We often lack the **time, energy,** and **psychological space** to develop ourselves and create inspiration



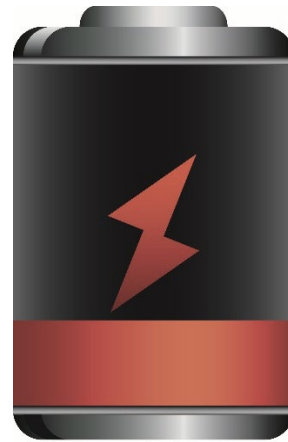
We often lack the **time, energy,** and **psychological space** to develop ourselves and create inspiration



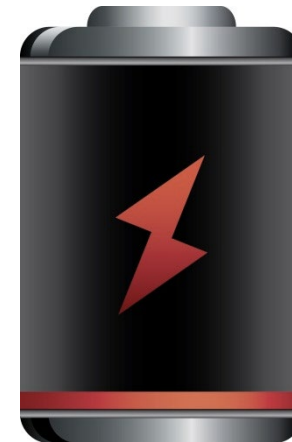
Our cognitive capacity is finite



Making decisions, self-regulating, and emotional processing all draw on our cognitive capacity



Everyday **work and business activities** utilize a major share of our processing power



These demands leave us fatigued and **less able to find the energy to reflect or inspire**

Our cognitive capacity is finite

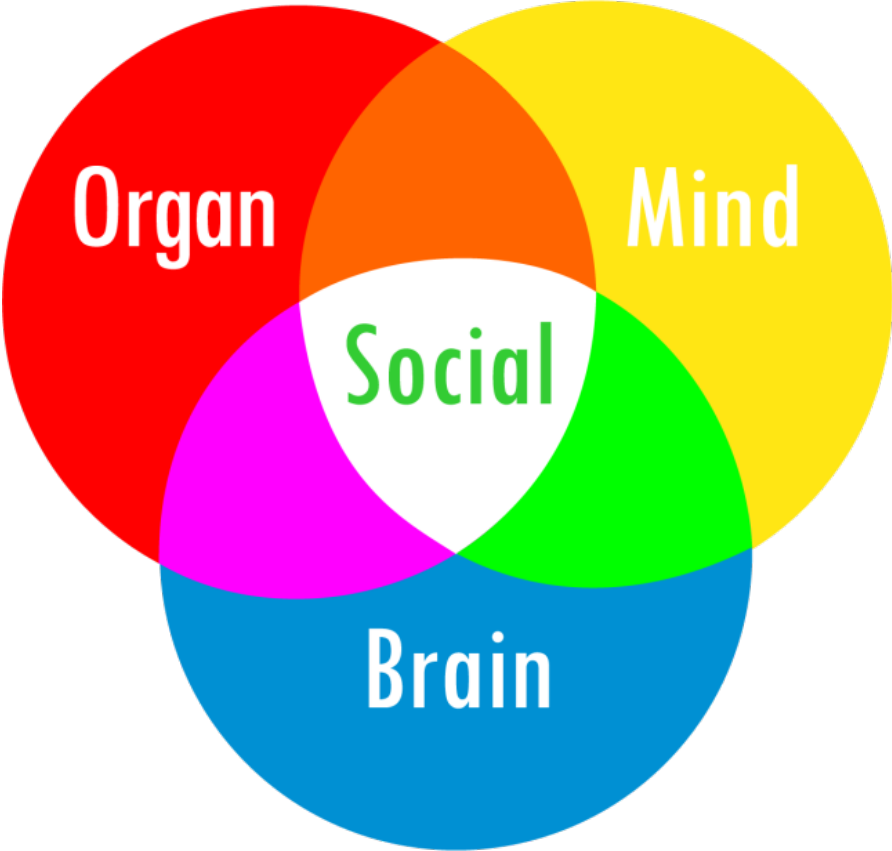
At risk educators

At risk students

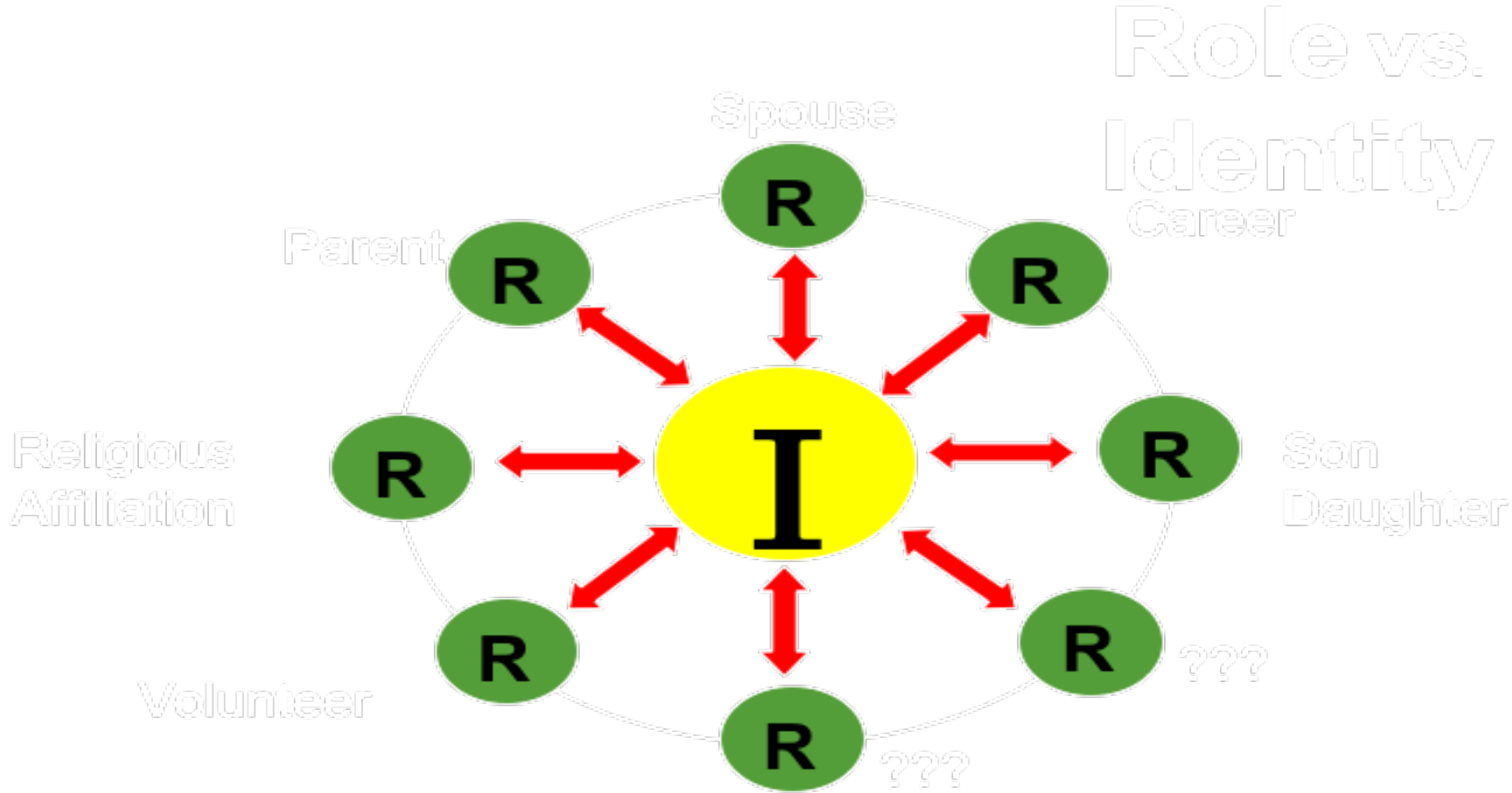
At risk parents

At risk society

Understand human system



Need for identity development



Inspiring, Shaping School Culture

Create new habits, attitudes

Change Rituals

**Lead with others –inspire educators
to lead**

**Think interventions to help change
behaviour**

Contacts: Mavis Ureke

Email: mavism@tb2b.co.za

Tel: 0113262499

Cell: 0762261100